

# Veterinary Ophthalmology Catalogue

*pro*  
*veterinary experts*





101710



170008



118111



132812



171807



171522



172514



152612



171712



170331



170004



141109



141009



110811



172120



500613

500714

### Starter Ophthalmic Kit

This instrument kit provides fundamental equipment for veterinary ophthalmic procedures including eyelid, third eyelid and eyelash surgery, conjunctival and corneal cytology/biopsy and enucleation. The kit has been reviewed and approved by DipECVO MRCVS RCVS and EBVS® European Specialist in Veterinary Ophthalmology.

Item. No.		Length mm
STROPHKIT	Complete Set, consisting of:	
101710	BEAVER Scalpel Handle • Finger lock grip	100
170008	CASTROVIEJO Eye Speculum	80
118111	METZENBAUM Scissors • Very fine • Blunt / blunt • Curved	115
132812	ADSON Tissue Forceps • Delicate • 1 x 2 teeth	120
171807	ST. MARTINS Forceps • 1 x 2 teeth • Tip width: 0.5 mm	90
171522	DESMARRES Chalazion Forceps • Size 2	90
172514	CASTROVIEJO Needle Holder • With Lock • Curved	140
152612	OLSEN-HEGAR Needle Holder (TC)	120
171712	LANDOLT Enucleation Scissors • Curved	130
170331	KUHNT Corneal Scraper	135
170004	BARRAQUER Eye Speculum	40
141109	2x HARTMANN Artery Forceps • Curved	100
141009	2x HARTMANN Artery Forceps • Straight	100
110811	STEVENS TENOTOMY SCISSORS • Straight • Blunt / blunt • Fine	110
172120	WESTCOTT Scissors • Curved • Blunt	110
500613	Instrument Box Base • Dimensions (in cm): L 30 x W 14 x H 3	
500714	Instrument Box Lid • Perforated • With textile filter and label holder • Colour: green	
981703	Fingered Silicone Insert • Sterilisable • Dimensions (in cm): W 12.5 x L 27.5	

### Advanced Ophthalmic Kit

This instrument kit provides fundamental equipment for the veterinary surgeon to perform corneal, conjunctival and intraocular procedures. The kit has been reviewed and approved by DipECVO MRCVS RCVS and EBVS® European Specialist in Veterinary Ophthalmology.

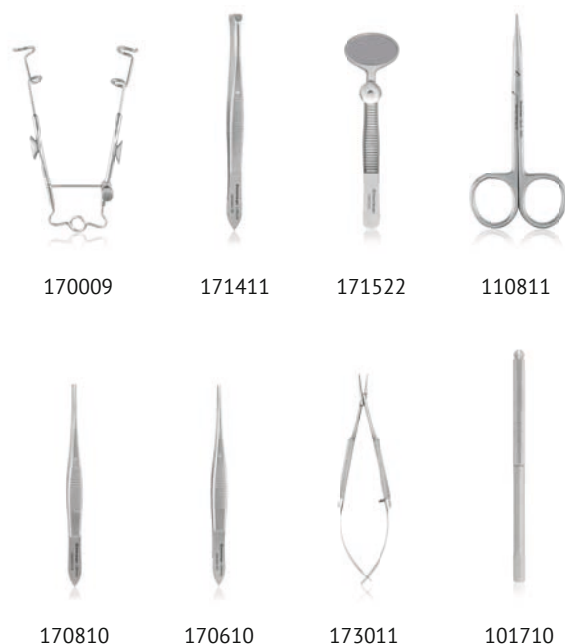
Item. No.		Length mm
ADVOPHKIT	Complete Set, consisting of:	
170512	CASTROVIEJO Cyclodialysis Spatula • Dual-ended	150
170464	WEBER Wire Loop	130
101710	BEAVER Scalpel Handle • Finger lock grip	100
172111	CASTROVIEJO Corneal Scissors • Curved, right	100
172110	CASTROVIEJO Corneal Scissors • Curved, left	100
173011	BARRAQUER Needle Holder • Curved	110
171510	TÜBINGEN Suture Forceps	100
171105	BARRAQUER Colibri Forceps • Tip width: 0.5 mm, tip curve: 45°	70
171503	CASTROVIEJO suture Forceps • Tip width: 0.3 mm	100
110911	STEVENS Tenotomy Scissors • Fine, curved	110
171309	ARRUGA Capsule Forceps	100
170340	JAMESON Strabismus/Muscle Hook	135
500613	Instrument Box Base • Dimensions (in cm): L 30 x W 14 x H 3	
500712	Instrument Box Lid • Perforated • With textile filter and label holder • Colour: red	
981703	Fingered Silicone Insert • Sterilisable	



### Mini Ophthalmic Kit

This kit contains the basic equipment for veterinary ophthalmic surgery on the eyelid.

Item. No.		Length mm
MINOPHKIT	Complete Set, consisting of:	
170009	GRÄFE Eyelid Retractor	90
171411	GRÄFE Fixation Forceps • With Pin	110
171522	Chalazion Forceps Desmarres • Size 2	90
110811	STEVENS Tenotomy Scissors • Fine, blunt / blunt, straight	110
170810	GRÄFE Iris Forceps • 1 x 2 teeth, straight	100
170610	GRÄFE Iris Forceps • Straight	100
173011	BARRAQUER Needle Holder • Curved	110
101710	BEAVER Scalpel Handle • Finger lock grip	100





118309



118309



118310

### SuperCut Scissors (MC)

- Designed with micro-fine serrations on one blade to prevent soft tissue slipping while the opposing razor sharp blade cuts with minimal tissue trauma
- German stainless steel construction and blade design allows for a much longer working life before sharpening is required
- Ergonomically designed ring handles improve instrument control, provide a better feel when dissecting tissue and help reduce hand fatigue

Item. No.		Length mm	Form
118309	SuperCut Iris Scissors (MC)	90	straight
118310	SuperCut Iris Scissors (MC)	90	curved
118311	SuperCut Iris Scissors (MC)	115	straight
118312	SuperCut Iris Scissors (MC)	115	curved



110609



110609



110709

### Iris Scissors

- Ideal for general and ophthalmic surgery
- Delicate cutting for precision work

Item. No.		Length mm	Form
110609	Iris Scissors	90	straight
110709	Iris Scissors	90	curved
110611	Iris Scissors	110	straight
110711	Iris Scissors	110	curved
110011	Iris Scissors (TC) • EICKEMEYER® Lifetime Warranty	115	straight
110111	Iris Scissors (TC) • EICKEMEYER® Lifetime Warranty	115	curved



110811



110811



110911



111011

### STEVENS Tenotomy Scissors

- Designed with a long shank to blade ratio, which helps provide a steady grip while maintaining greater precision cutting
- Very useful in small confined areas

Item. No.		Length mm	Form
110811	STEVENS Tenotomy Scissors • Fine • Blunt/blunt	110	straight
110911	STEVENS Tenotomy Scissors • Fine • Blunt/blunt	110	curved
111011	STEVENS Tenotomy Scissors • One blade with a button tip • Blunt/sharp	115	straight

### METZENBAUM Scissors

- Many surgeons prefer METZENBAUM scissors because of their longer shank to blade ratio, which provides greater control
- These scissors are suitable for cutting through delicate tissues
- For surgeons who make heavy demands of their instruments we recommend the tungsten carbide version

Item. No.		Length mm	Form
118011	METZENBAUM Scissors	115	straight
118111	METZENBAUM Scissors	115	curved
116011	METZENBAUM Scissors (TC)	115	straight
116111	METZENBAUM Scissors (TC)	115	curved



118011



118011



118111

### LANDOLT Enucleation Scissors

Curved scissors designed with blunt tips to assist in the dissection of the optic nerve and surrounding tissue from the eyeball.

Item. No.		Length mm	Form
171712	LANDOLT Enucleation Scissors	130	curved



### CASTROVIEJO Scissors

- Designed with fine tips and a double leaf spring mechanism for self-opening action
- The ridged handle and guide pin enhances instrument control

Item. No.		Length mm	Form
171710	CASTROVIEJO Iridectomy Scissors	100	curved
172111	CASTROVIEJO Corneal Scissors	100	curved, right
172110	CASTROVIEJO Corneal Scissors	100	curved, left



171710



171710



172111



172110



### VANNAS Cataract Scissors

- Designed with extra thin angled blades and a double leaf spring mechanism for self-opening action
- The ridged handle enhances instrument control

Item. No.		Length mm	Form
172208	VANNAS Cataract Scissors • Sharp/sharp	85	curved



### WESTCOTT Scissors

- Designed with curved blades and double leaf spring mechanism for self-opening action
- Useful for cutting delicate tissue

Item. No.		Length mm	Form
172120	WESTCOTT Scissors • Blunt/blunt	110	curved



### ARRUGA Capsule Forceps

Designed with downward curving tips at a 45° angle and ridged linear grip to enhance instrument grip.

Item. No.		Length mm
171309	ARRUGA Capsule Forceps	100



**GILL-ARRUGA Capsule Forceps**

Designed with a fine down curving pointed tip and ridged linear grip for a comfortable grip. This instrument is suitable for the handling of delicate ocular tissues.

Item. No.		Length mm
171307	GILL-ARRUGA Capsule Forceps	75

**HESS Capsule Forceps**

Opposing surfaces have a row of fine teeth with fine double curving pointed tips and ridged handles to enhance grip.

Item. No.		Length mm
171306	HESS Capsule Forceps	65

**BISHOP-HARMON Iris Forceps**

The flat, straight and smooth handles with 3 holes provide excellent grip.

Item. No.		Length mm
171108	BISHOP-HARMON Iris Forceps <ul style="list-style-type: none"> <li>• 1 x 2 teeth</li> <li>• Width: 0.5 mm</li> </ul>	85





170610



170910



### GRÄFE Iris Forceps

Designed with a ridged handle and guide pins for excellent instrument grip/control.

Item. No.		Length mm	Form
170610	GRÄFE Iris Forceps	100	straight
170710	GRÄFE Iris Forceps	100	curved
170810	GRÄFE Iris Forceps • 1 x 2 teeth	100	straight
170910	GRÄFE Iris Forceps • 1 x 2 teeth	100	curved



### HESS (Colibri) Iris Forceps

Designed for holding flaps of cornea or sclera and a ridged handle for improved instrument grip.

Item. No.		Length mm
171007	HESS (Colibri) Iris Forceps • 1 x 2 teeth	70



### BARRAQUER (Colibri) Forceps

Designed with ridged, long, straight and flat handles which contains a long single hole.

Item. No.		Length mm
171105	BARRAQUER (Colibri) Iris Forceps • 1 x 2 teeth • Tip width: 0.5 mm • Tip curve: 45°	70



**BARRAQUER-KATZIN (Colibri) Forceps**

Designed with ridged, straight and flat handles to enhance instrument grip.



Item. No.		Length mm
171107	BARRAQUER-KATZIN (Colibri) Forceps <ul style="list-style-type: none"> <li>• Tip width: 0.12 mm</li> <li>• Tip angle: 90°</li> <li>• Interdigitating teeth</li> </ul>	70

**CASTROVIEJO Suture Forceps**

Designed with straight shaft tips with extremely delicate teeth and a 5.5 mm tying platform.



Item. No.		Length mm
171503	CASTROVIEJO Suture Forceps <ul style="list-style-type: none"> <li>• Tip width: 0.3 mm</li> </ul>	100
171505	CASTROVIEJO Suture Forceps <ul style="list-style-type: none"> <li>• Tip width: 0.5 mm</li> </ul>	100

171503

**ST. MARTIN Corneal Forceps**

Very fine toothed forceps used in handling cornea.



Item. No.		Length mm
171807	ST.MARTIN Corneal Forceps <ul style="list-style-type: none"> <li>• 1 x 2 teeth</li> <li>• Tip width: 0.5 mm</li> </ul>	90



171510



172035



### Suture Forceps

Item. No.		Length mm	Form
171510	TÜBINGEN Suture Forceps <ul style="list-style-type: none"> <li>• Without teeth</li> <li>• 6.5 mm platform</li> <li>• With thread plates for threading</li> </ul>	100	straight
172035	HARMS Thread Forceps <ul style="list-style-type: none"> <li>• Without teeth</li> <li>• 6 mm platform</li> <li>• For threads from 7-0 to 9-0</li> </ul>	100	curved



173011



### BARRAQUER Needle Holder

- Ideal for fine suturing in the anterior chamber
- Round knurled ridged handles

Item. No.		Length mm	Form
173011	BARRAQUER Needle Holder	110	curved
173012	BARRAQUER Needle Holder	130	curved



### BARRAQUER-TROUTMAN Needle Holder

- Ideal for fine suturing in the anterior chamber
- Round knurled ridged handles with an automatic locking mechanism

Item. No.		Length mm	Form
173010	BARRAQUER-TROUTMAN Needle Holder	100	curved

**BOYNTON Needle Holder (TC)**

- Designed with cross-serrated jaws to firmly hold needles and a single spring mechanism for self-opening action
- A multi-position ratchet provides controlled grip pressure and smooth grip release

Item. No.		Length mm	Form
173112	BOYNTON Needle Holder (TC)	120	straight

**CASTROVIEJO Needle Holders**

- The ridged handles help enhance instrument grip and control
- Double leaf spring mechanism
- Locking mechanism

Item. No.		Length mm	Form
172414	CASTROVIEJO Needle Holder	140	straight
172514	CASTROVIEJO Needle Holder	140	curved

**DOUGLAS Cilia Forceps**

Designed with fine horizontal serrations that help correct abnormal growth of lashes from the posterior lamella (e. g. distichiasis).

Item. No.		Length mm
170309	DOUGLAS Cilia Forceps	90

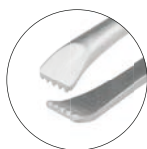




### GRADLE Cilia Forceps

- Suitable for correcting abnormal growth of lashes from the posterior lamella (e.g. distichiasis)
- Smooth, squared off positive gripping jaws
- Double leaf spring mechanism

Item. No.		Length mm
170310	GRADLE Cilia Forceps	95



### GRÄFE Fixation Forceps

Jaws are designed with interdigitating teeth to provide a firm grip on eyelashes.

Item. No.		Length mm
171411	GRÄFE Fixation Forceps • With pin	110
171412	GRÄFE Fixation Forceps • With lock	110

171411



### DESMARRES Chalazion Forceps

- Designed with a solid lower plate and an open upper plate
- A locking thumb screw allows both hands to be kept free

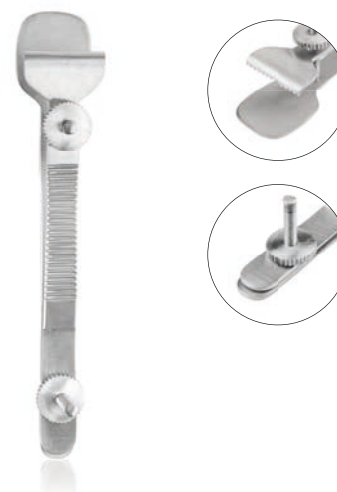
Item. No.		Length mm
171522	DESMARRES Chalazion Forceps • Size 2	90

**KNAPP Conjunctiva Forceps**

Thumb forceps with a grooved handle and large apertures to help grasp the conjunctiva.

**STADES Nictating Forceps**

- Thumb forceps with two locking mechanisms designed specifically for third eyelid surgery
- Lower plate is solid and the upper plate is semi-curved

**CASTROVIEJO Cyclodialysis Spatula**

Designed with a smooth, straight, flat, delicate handle and dual-ended delicate sharp tips.





### KUHNNT Corneal Scraper

Designed with a delicate sharp tip at a 45° angle on a flat handle.

Item. No.		Length mm
170331	KUHNNT Corneal Scraper	135



### JAMESON Strabismus/Muscle Hook

Designed to elevate the muscle tissue for dissection and reattachment.

Item. No.		Length mm
170340	JAMESON Strabismus/Muscle Hook	135



### GRÄFE Iris Hook

Designed with a sharp hook and a polished flat handle.

Item. No.		Length mm
170440	GRÄFE Iris Hook • Blunt	120

**GASS Retinal Detachment Hook**

Designed with an oval hole that helps securely place a retaining suture on ocular muscles.

Item. No.		Length mm
170441	GASS Retinal Detachment Hook <ul style="list-style-type: none"> <li>Aperture: 1.5 mm diameter</li> <li>Hook length: 13 mm</li> </ul>	133

**MEYHOEFER Chalazion Curettes**

Designed with a sharp ended curette and a straight, flat, delicate handle.

Item. No.		Length mm
170420	MEYHOEFER Chalazion Curette <ul style="list-style-type: none"> <li>Ø 2.0 mm</li> </ul>	130
170425	MEYHOEFER Chalazion Curette <ul style="list-style-type: none"> <li>Ø 2.5 mm</li> </ul>	130



170420

**GRÄNITZ Eyelid Spatula**

Designed to help protect the delicate structure of the eyelid during incision.

Item. No.		Length mm
170221	GRÄNITZ Eyelid Spatula <ul style="list-style-type: none"> <li>Size 1</li> <li>10 mm</li> </ul>	77
170222	GRÄNITZ Eyelid Spatula <ul style="list-style-type: none"> <li>Size 2</li> <li>16 mm</li> </ul>	77
170223	GRÄNITZ Eyelid Spatula <ul style="list-style-type: none"> <li>Size 3</li> <li>22 mm</li> </ul>	77
170224	GRÄNITZ Eyelid Spatula <ul style="list-style-type: none"> <li>Size 4</li> <li>25 mm</li> </ul>	77



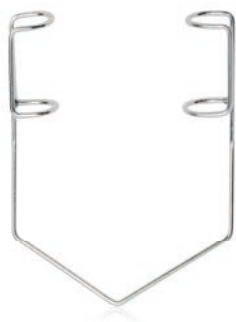
170221

170222

170223

170224

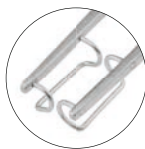




### BARRAQUER Speculum

Wire speculum designed with fenestrated blades to help keep the eyelids retracted.

Item. No.		Length mm
170004	BARRAQUER Speculum	40



### CASTROVIEJO Speculum

Designed with a sharp hook and a polished flat handle.

Item. No.		Length mm
170008	CASTROVIEJO Speculum	80



### GRÄFE Eyelid Retractor

Wire retractor with a fine control mechanism to minimise friction.

Item. No.		Length mm
170009	GRÄFE Eyelid Retractor	90

**DESMARRES Retractors**

Designed with a smooth curved blunt blade to help manually retract the eyelid.

Item. No.		Length mm
170114	DESMARRES Retractor • Size 2	140
170116	DESMARRES Retractor • Size 3	160



170114

**KNOLLE-PEARCE Irrigating Vectis Loop**

Designed to gently remove the nucleus by using mechanical and hydrostatic forces.

Item. No.		Length mm
441120	KNOLLE-PEARCE Irrigating Vectis Loop	50

**WEBER Wire Loop**

Designed with a delicate, long loop on a straight, flat handle.

Item. No.		Length mm
170464	WEBER Wire Loop • Loop length: 5 mm	130

**BOWMAN Lacrimal Probe**

- Helps to determine the functional status of the lacrimal drainage system
- Can also be used to help perform a dacryocystorhinostomy

Item. No.		Length mm
170470	BOWMAN Lacrimal Probe • Size 0/00	130

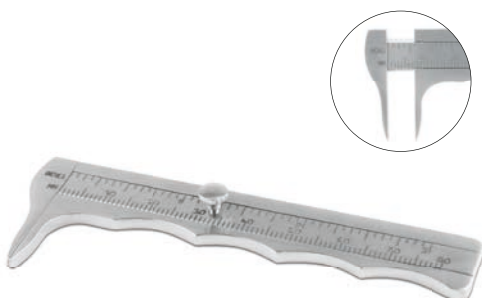




170486



170481



### KELLNAR Lacrimal Dilators and Tubes

- Helps to determine the functional status of the lacrimal drainage system
- Silicone tubing can be used to irrigate and aspirate with the dilator

Item. No.		Length mm
170486	KELLNAR Lacrimal Dilator • Left	85
170487	KELLNAR Lacrimal Dilator • Right	85
170490	KELLNAR Lacrimal Dilator • Dual-ended	145
170503	KELLNAR Probe Silicone Tube • Inner Ø 0.3 mm	1,000
170505	KELLNAR Probe Silicone Tube • Inner Ø 0.5 mm	1,000
170507	KELLNAR Probe Silicone Tube • Inner Ø 0.7 mm	1,000

### WILDER Lacrimal Dilators

Designed with a tapered blunt tip and a round knurled handle.

Item. No.		Length mm
170481	WILDER Lacrimal Dilator • Size 1	110
170482	WILDER Lacrimal Dilator • Size 2	110
170483	WILDER Lacrimal Dilator • Size 3	110

### CASTROVIEJO Caliper

Ideal for precise measurements for TPLO procedures.

Item. No.		Length mm
173554	CASTROVIEJO Caliper • Increments: 0.5 mm • Maximum measurement: 20 mm	85

### JAMESON Caliper

Graduated in inches and mm with thin tips, chrome.

Item. No.		Length mm
170120	JAMESON Caliper • Measurement range: 0 – 80 mm	100

### Lacrimal Duct Cannulae

- Suitable for flushing purulent debris through the nasolacrimal duct
- Includes Luer hub

Item. No.		Length mm	Form
440605	ANEL Lacrimal Cannula <ul style="list-style-type: none"> <li>• 0.6 x 15 mm</li> <li>• 23 G</li> </ul>	45	straight
440705	ANEL Lacrimal Cannula <ul style="list-style-type: none"> <li>• 90°</li> <li>• 0.6 x 15 mm</li> <li>• 23 G</li> </ul>	40	curved
441007	Lacrimal Duct Cannula <ul style="list-style-type: none"> <li>• Tapered</li> <li>• 0.6 x 25 mm</li> <li>• 23 G</li> </ul>	30	curved
440805	Lacrimal Duct Cannula <ul style="list-style-type: none"> <li>• Tapered</li> <li>• Olive tip</li> <li>• 0.6 x 30 mm</li> <li>• 23 G</li> </ul>	45	straight
440905	Lacrimal Duct Cannula <ul style="list-style-type: none"> <li>• Olive tip</li> <li>• 0.6 x 33 mm</li> <li>• 23 G</li> </ul>	40	curved
AR440625	Lacrimal Cannula <ul style="list-style-type: none"> <li>• 25 G</li> </ul>		curved
AR440626	Lacrimal Cannula <ul style="list-style-type: none"> <li>• 26 G</li> </ul>		curved
AR440627	Lacrimal Cannula <ul style="list-style-type: none"> <li>• 27 G</li> </ul>		curved
AR440630	Lacrimal Cannula <ul style="list-style-type: none"> <li>• 30 G</li> </ul>		curved



### Enbio S B-Class Autoclave

The Enbio S is the fastest B-class autoclave on the market. Thanks to its compact size, it fits into every practice and the sterilisation chamber offers enough space for a standard surgical kit. The Enbio S is set up in no time and it is simple and intuitive to use – switch it on, select the mode, sterilise – done!

- Extremely short program times of only 7 to 15 minutes
- Revolutionary low operating costs thanks to Magic Filter
- Very quiet operating noise of only 32 dBA
- Automatic documentation on USB stick
- Highest quality at a low price
- External dimensions (in mm): W 252 x H 162 x D 561
- Weight: 15 kg

Item. No.	
500000	Enbio S B-Class Autoclave





050889



050889



050893



050894

### EickFil Ophthalmic Suture Material – PGA

- Type: Braided and coated multifilament
- Coating: Polycaprolactone and calcium stearate (1 %)
- Tissue reaction: Minimal
- Absorption: Total absorption in approximately 60 to 90 days. Approximately 50 % of tensile strength remain after 21 days.
- Box with 12 sutures

Item. No.		Length cm
050889	EickFil PGA <ul style="list-style-type: none"> <li>• USP 9/0, EP 0.3</li> <li>• 3/8 circle, DSP 6.4 mm 200 µm</li> <li>• Side cutting spatula</li> <li>• Colour: violet</li> </ul>	30
050890	EickFil PGA <ul style="list-style-type: none"> <li>• USP 6/0, EP 0.7</li> <li>• 3/8 circle, DS 12 mm</li> <li>• Reverse cutting</li> <li>• Colour: violet</li> </ul>	45
050891	EickFil PGA <ul style="list-style-type: none"> <li>• USP 3/0, EP 2</li> <li>• 3/8 circle, DS 19 mm, easy pass</li> <li>• Reverse cutting</li> <li>• Colour: undyed</li> </ul>	50
050892	EickFil PGA <ul style="list-style-type: none"> <li>• USP 3/0, EP 2</li> <li>• 3/8 circle, DS 24 mm</li> <li>• Reverse cutting</li> <li>• Colour: undyed</li> </ul>	75
050893	EickFil PGA <ul style="list-style-type: none"> <li>• USP 6/0, EP 0.7</li> <li>• 1/2 circle, HR 17 mm</li> <li>• Round bodied taper point</li> <li>• Colour: violet</li> </ul>	75
050894	EickFil PGA <ul style="list-style-type: none"> <li>• USP 10/0, EP 0.2</li> <li>• 3/8 circle, 2 x DSP 6.2 mm 150 µm</li> <li>• Side cutting spatula double armed</li> <li>• Colour: violet</li> </ul>	30
050895	EickFil PGA <ul style="list-style-type: none"> <li>• USP 9/0, EP 0.3</li> <li>• 3/8 circle, 2 x DSP 6.4 mm 200 µm</li> <li>• Side cutting spatula double armed</li> <li>• Colour: violet</li> </ul>	30
050896	EickFil PGA <ul style="list-style-type: none"> <li>• USP 8/0, EP 0.4</li> <li>• 3/8 circle, 2 x DSP 6 mm 200 µm</li> <li>• Side cutting spatula double armed</li> <li>• Colour: violet</li> </ul>	45
050897	EickFil PGA <ul style="list-style-type: none"> <li>• USP 7/0, EP 0.5</li> <li>• 3/8 circle, 2 x DSP 8 mm 200 µm</li> <li>• Side cutting spatula double armed</li> <li>• Colour: violet</li> </ul>	45
050898	EickFil PGA <ul style="list-style-type: none"> <li>• USP 6/0, EP 0.7</li> <li>• 1/4 circle, 2 x VSP 8 mm 300 µm</li> <li>• Side cutting spatula double armed</li> <li>• Colour: violet</li> </ul>	45

### EickFil Ophthalmic Suture Material – Nylon

- Type: Monofilament
- Composition: Extrusion of polyamide 6.0 or 6.6
- Coating: None
- Colour: black
- Tissue reaction: Minimal
- Absorption: Non absorbable, gradually encapsulated by connective tissue. The thread mass diminishes, approximately 10 % a year by rupture of chemical links (hydrolytic action).
- Presentation: Box with 12 sutures

#### Characteristics

- High tensile strength, non absorbable
- Synthetic
- Monofilament with microscopic uniform diameter
- Pliability and softness
- Hermetically sealed packing

Item. No.		Length cm
050899	EickFil Nylon <ul style="list-style-type: none"> <li>• USP 10/0, EP 0.2</li> <li>• 3/8 circle, 2 x DSP 6.4 mm 220 µm</li> <li>• Side cutting spatula double armed</li> </ul>	45
0508900	EickFil Nylon <ul style="list-style-type: none"> <li>• USP 9/0, EP 0.3</li> <li>• 3/8 circle, 2 x DSP 6.2 mm 150 µm</li> <li>• Side cutting spatula double armed</li> </ul>	45



050899



0508900

### EickFil Ophthalmic Suture Material – Silk

- Type: Braided multifilament
- Composition: Braided fibres from the cocoon of the silkworm
- Coating: Waxes Silicone
- Colour: black
- Tissue reaction: Moderate
- Absorption: Silk suture elicits an initial inflammatory reaction in tissues, which is followed by gradual encapsulation of the suture by fibrous connective tissues.
- Presentation: Box with 12 sutures

#### Characteristics

- High tensile strength, non absorbable
- Braided or twisted structure
- Coated multifilament
- Hermetically sealed packing

Item. No.		Length cm
050901	EickFil Silk <ul style="list-style-type: none"> <li>• USP 4/0, EP 1.5</li> <li>• 3/8 circle, DS 19 mm</li> <li>• Reverse cutting</li> </ul>	45





### Fine Surgical Blades

- For ocular, neuro and other micro-surgical procedures
- Superior blades that can be "locked" into the Beaver surgical handle
- 25 per pack

Item. No.	Length mm
101763	Fine Surgical Blade, Size 63 • Sharp on two sides, pointed tip
101764	Fine Surgical Blade, Size 64 • Sharp on one side, rounded tip
101765	Fine Surgical Blade, Size 65 • Blade size 11 alternative
101769	Fine Surgical Blade, Size 69 • Sharp on two sides, rounded tip
101710	Beaver Scalpel Handle • Finger lock grip
101715	Beaver Scalpel Handle • Handle lock grip

### Intraocular Silicone Prosthesis

- Constructed from black silicone with low immunoreactive characteristics
- Helps improve cosmetic results post enucleation
- Range of sizes available

Item. No.	Length mm	Diameter mm
173500	Eye Implant Introducer	125
173514	Silicone Prosthesis	14
173515	Silicone Prosthesis	15
173516	Silicone Prosthesis	16
173517	Silicone Prosthesis	17
173518	Silicone Prosthesis	18
173519	Silicone Prosthesis	19
173520	Silicone Prosthesis	20
173521	Silicone Prosthesis	21
173522	Silicone Prosthesis	22
173523	Silicone Prosthesis	23
173524	Silicone Prosthesis	24
173526	Silicone Prosthesis	26
173528	Silicone Prosthesis	28
1735290030	Silicone Prosthesis	30
1735290033	Silicone Prosthesis	33
1735290036	Silicone Prosthesis	36
1735290038	Silicone Prosthesis	38
1735290040	Silicone Prosthesis	40
1735290043	Silicone Prosthesis	43
1735290045	Silicone Prosthesis	45
1735290047	Silicone Prosthesis	47
1735290050	Silicone Prosthesis	50
1735290052	Silicone Prosthesis	52
1735290055	Silicone Prosthesis	55
1735290060	Silicone Prosthesis	60





### AlgerBrush II Corneal Burr

The AlgerBrush II is a battery powered, handheld, low torque motorised burr. It has been designed to remove foreign bodies from the cornea or sclera of patients.

The burr in this rotary instrument is used as a “brush” rather than a drill and the foreign bodies are thus “brushed” from the eye leaving a smooth surface, which in turn heals much faster than with other instruments that could be used for this purpose.

AlgerBrush II Unit includes 3.5 mm Round Medium Grit Diamond Burr.

\*According to the paper “Veterinary Ophthalmology” ([2013] 16, 2, 83 – 88), the AlgerBrush II has been successfully used to treat spontaneous corneal epithelial defects (SCCEDs) in dogs, in combination with a bandage contact lens.

#### Item. No.

170010	AlgerBrush II Unit
170011	AlgerBrush II Corneal Burr <ul style="list-style-type: none"> <li>• Ø 3.5 mm</li> <li>• Chuck attachment included</li> </ul>
170013	AlgerBrush II Corneal Burr <ul style="list-style-type: none"> <li>• Ø 2.5 mm</li> </ul>
170012	AlgerBrush II Corneal Burrs <ul style="list-style-type: none"> <li>• Ø 1 mm</li> <li>• 5 per pack</li> </ul>
170014	AlgerBrush II Diamond Grinding Wheel <ul style="list-style-type: none"> <li>• Ø 4 mm</li> <li>• Fine</li> <li>• With chuck</li> <li>• Convenient for recurrent corneal erosion</li> </ul>
E170010001	Spare Chuck for AlgerBrush II



### Bausch & Lomb PureVision® 2 Bandage Contact Lenses

Contact bandage lenses act as a protective shield on the cornea. They permit corneal repair and improve patient comfort by preventing contact between damaged cornea and eyelids.

Recommendation to use for:

**Corneal ulceration:** to reduce pain and to retain tear film over ulcerated area to aid healing.

**Corneal edema:** may prevent rupture of epithelial bullae and reduce discomfort caused by abrasion of ulcers.

**Adnexal problems:** distichiasis, entropion, ectopic cilia – to reduce corneal abrasion until surgery can be performed.

**Traumatic injury:** laceration or perforation.

- High definition optics offers a clear and sharp view
- Excellent stabilisation
- Comfortable contact lens wear for up to 30 days and nights
- Ensures an optimal supply of oxygen to the cornea and makes eyes look clear
- Packaging: 6 lenses per box

#### Item. No.

173540	Bausch & Lomb PureVision® 2 Bandage Contact Lenses
--------	--





### Cautery Pen

- Precise cauterisation thanks to the very fine tip (28 mm)
- Easy to use
- Operating temperature: 600 °C
- Individual sterile packaging
- For single use only

#### Item. No.

173430 Cautery Pen



166520



166530

### Sugi Swabs

- Sugi absorbent materials are especially suitable for dabbing those areas where special care must be taken (e.g. neural structures and ophthalmic tissue)
- Sugi absorbent materials are manufactured from cellulose material
- The material undergoes soft /elastic expansion immediately upon contacting moisture
- The absorptive capacity is approximately 17 times its own weight

#### Item. No.

Length  
mm

166520 Sugi Swab  
• Wedge tip  
• Set of 200 (10 per pack – sterile)

70

166530 Sugi Swab  
• Cylindrical  
• 500 per pack

70

## SCORE® Ergo Support Chair

The SCORE® Ergo Support Chair is specially developed for ophthalmologists. It allows an ergonomic sitting position and offers you comfortable support during long periods of seated work. Special features of the SCORE® Ergo Support chair are its ergonomically shaped armrests. They can be brought close to the body and provide your forearms optimal support. The height adjustment of the armrests allows an upright sitting position when using a microscope or other precision instrument. The Ergo Support helps you to assume a relaxed posture: the neck, shoulders and back are relieved.

- Easy height adjustment, seat and back angle
- SCORE® Ergo Shape seat with rounded corners ensure an active sitting position
- Compact lumbar support can be easily positioned in the lumbar region
- Strong aluminium base with large wheels for easy manoeuvrability

### Technical specifications

- Height adjustment (with foot control): 52 – 71 cm
- Working height: 80 – 90 cm
- Seat dimensions: Ø 40 cm
- Lumbar support (in cm): W 33 x H 23
- Foot cross dimensions: Ø 68 cm
- Armrests (compact triangular shape): 115° rotation, height adjustment: max. 11 cm
- Armrest upholstery (in cm): W 15 x D 40 cm (swinging)

### Item. No.

610060 SCORE® Ergo Support Chair





6101010012



44 cm

JUMPER



34 cm

AMAZONE



6101010018

## SCORE® AMAZONE/JUMPER Stools

The ever so popular SCORE® treatment stools now come in fresh colours – real eye-catchers for your practice!

- Comfortable, cushioned seat
- Easily washable synthetic leather
- Smooth running double castors
- Aluminum base with Ø 54 cm

Item. No.		Colour
6101010004	SCORE® AMAZONE	Black
6101010008	SCORE® AMAZONE	Anthracite
6101010012	SCORE® AMAZONE	Capri Blue
6101010016	SCORE® AMAZONE	Forest Green
6101010020	SCORE® AMAZONE	Burgundy
6101010024	SCORE® AMAZONE	Orange
6101010028	SCORE® AMAZONE	Pink
6101010032	SCORE® AMAZONE	Ochre Yellow
6101010003	SCORE® JUMPER	Black
6101010007	SCORE® JUMPER	Anthracite
6101010011	SCORE® JUMPER	Capri Blue
6101010015	SCORE® JUMPER	Forest Green
6101010019	SCORE® JUMPER	Burgundy
6101010023	SCORE® JUMPER	Orange
6101010027	SCORE® JUMPER	Pink
6101010031	SCORE® JUMPER	Ochre Yellow

## SCORE® JUMPER/AMAZONE Balance Saddle Stools

The uniquely adjustable Balance mechanism from SCORE® ensures that the saddle moves subtly along with your movements. These 'micro' movements of your pelvis ensure that muscle groups and intervertebral discs are not constantly under severe static strain. This prevents pain, helps you maintain your working posture longer and exercises your core muscles. The degree of movement can be set by your own preference and adjusted by rotating the ring.

Item. No.		Colour
6101010002	SCORE® AMAZONE Balance	Black
6101010006	SCORE® AMAZONE Balance	Anthracite
6101010010	SCORE® AMAZONE Balance	Capri Blue
6101010014	SCORE® AMAZONE Balance	Forest Green
6101010018	SCORE® AMAZONE Balance	Burgundy
6101010022	SCORE® AMAZONE Balance	Orange
6101010026	SCORE® AMAZONE Balance	Pink
6101010030	SCORE® AMAZONE Balance	Ochre Yellow
6101010001	SCORE® JUMPER Balance	Black
6101010005	SCORE® JUMPER Balance	Anthracite
6101010009	SCORE® JUMPER Balance	Capri Blue
6101010013	SCORE® JUMPER Balance	Forest Green
6101010017	SCORE® JUMPER Balance	Burgundy
6101010021	SCORE® JUMPER Balance	Orange
6101010025	SCORE® JUMPER Balance	Pink
6101010029	SCORE® JUMPER Balance	Ochre Yellow

**SCORE® MEDICAL Treatment Stools**

- Comfortable, padded seat with Ø 40 cm
- Easily washable synthetic leather cover
- Height adjustable by gas spring from approx. 55 – 74 cm
- Smooth PU double castors
- Optimal freedom of movement
- Aluminum base with Ø 54 cm
- Multiple colour options available. Colours other than black are special order only and non-returnable.

Item. No.		Colour
6101200001	SCORE® MEDICAL	Black
6101200002	SCORE® MEDICAL	Anthracite
6101200003	SCORE® MEDICAL	Capri Blue
6101200004	SCORE® MEDICAL	Forest Green
6101200005	SCORE® MEDICAL	Burgundy
6101200006	SCORE® MEDICAL	Orange
6101200007	SCORE® MEDICAL	Pink
6101200008	SCORE® MEDICAL	Ochre Yellow
610190	SCORE® MEDICAL Lumbar Support <ul style="list-style-type: none"> <li>• Compact, functional lumbar support</li> <li>• Height and inclination easily adjustable</li> </ul>	Black



6101200006

**SCORE® MEDICAL Treatment Stools**

- Comfortable, padded seat with Ø 40 cm
- Compact, functional lumbar support (height and inclination easily adjustable)
- Foot operation allows easy adjusting of seat height during operations (operator remains sterile)
- Optimum freedom of movement
- Easily washable synthetic leather cover
- Smooth-running PU double rollers
- Gas spring column, height-adjustable from approx. 56 – 75 cm
- Aluminum base with Ø 54 cm
- 5 year warranty

Item. No.		Colour
610195	SCORE® MEDICAL Operating Chair	Black



# HEINE Binocular Loupes

Your optimal loupe is as individual as your work. HEINE Binocular Loupes set a benchmark for design, high-tech materials and precise manufacturing methods. Various magnifications, working distances, wearing options and illumination systems are available. Experience the difference of getting less tired – even during long procedures.

## Optics

HR: High Resolution achromatic optics with excellent optical qualities for 2.5x magnification.

HRP: High Resolution Prismatic optics with excellent optical qualities for 3.5x, 4x and 6x magnification.

Optics / Magnification	Working Distance
HR 2.5x	340 mm
HR 2.5x	420 mm
HRP 3.5x	420 mm
HRP 4x	340 mm
HRP 6x	340 mm

## Features

- Lightweight: 51 g (HR) or 81 g (HRP)
- Water-resistant
- Independent adjustment of left and right optics for perfect pupillary distance
- i-View loupe mount with flip-up function

## Mounting Options

### HEINE S-FRAME

- Maximum comfort with a modern, ergonomic design
- Malleable temples and nose pad can be customized to fit any face perfectly
- Innovative light materials – weights only 24 g
- Tough polycarbonate protective lenses
- Optional clip-in correction frame for prescription lenses



### HEINE Professional L Headband

- Ideal for spectacle-wearers in combination with their own spectacles
- Fully-adjustable for height and width to fit any head
- Hygienic and comfortable leather cushions
- Optional S-GUARD splash protection and clip-in correction frame for prescription lenses



### HEINE Binocular Loupes on S-FRAME

Your optimal magnifying glass is as individual as your daily work. HEINE high-tech optics offer a wide variety of magnifying glasses to meet individual needs.

- i-View on an S-FRAME (spectacle frame)
- Working Distance: 420 mm
- Overview field: 130 mm
- Depth of field: 180 mm
- Innovative, light materials – weighs only 24 g

#### Includes:

- Protective glasses
- Two sterilizable swivelling levers
- Holding strap
- Cleaning cloth

Alternate working distance available in 340 mm and 520 mm.

Item. No.		WD* mm
HE51100	HEINE Binocular Loupes on S-FRAME • HR 2.5x	420



### HEINE LoupeLight 2 Set

Your optimal magnifying glass is as individual as your daily work. HEINE high-tech optics offer a wide variety of magnifying glasses to meet individual needs.

- i-View on an S-FRAME and LoupeLight2 with detachable yellow filter
- Working Distance: 420 mm
- HR 2.5x optics

#### Includes:

- mPack mini
- mPack mini belt clip
- E4-USB plug-in transformer
- Connecting cord
- Protective lenses
- 2 sterilizable levers
- Retaining cord, cleaning cloth, carrying case

Alternate working distance available in 340 mm and 520 mm.

Item. No.		WD* mm
HE50100	HEINE LoupeLight 2 Set • HR 2.5x	420



\* Working Distance





## HEINE LoupeLight2

### Compact LED HQ Headlight

HEINE has set a new standard which maintains that only the best is good enough, from the selection of materials to processing, from light intensity to dimmability, and from thermal management to a colour rendering index as high as possible.

- LED in HQ
- Compact, lightweight 50 g
- Exclusive aluminium housing protects the optics against dust and moisture to ensure an extraordinary long lifespan and optimal thermal management
- Compact coaxial design ensures a completely shadow-free image and allows for excellent illumination of difficult to see areas
- Replaceable connecting cord with high-quality splashproof threaded connector with a length of 1.5 m. Connects the LoupeLight2 with the mPack mini

### Technical specifications

- Illumination: 55,000 lux
- Colour Temperature: 4,000 kelvin
- LED Operating Life: 50,000 hours
- Spot Size is shadow free and designed to complement the HR / HRP loupes
- Angle of Declination is stepless and individually adjustable for every examination
- Operating Time: 9 hours with mPack mini (in continuous operation at full power typ. 4 hours)

### HEINE mPack mini

- Freedom from cables that tie the user to desk, wall or static power supplies
- Operating time: 9 hours
- Charging time: 4 hours
- Charge status indicator
- Stepless light intensity control
- USB cord with E4-USB Medical approved plug-in power supply
- Simple cleaning (closed housing, no seams at the sides, few edges)
- Compact and lightweight – with a weight of just 95 g and dimensions of 44 x 23 x 101 mm the power source can be easily stowed
- Optimised mPack mini belt clip for easy attachment of the power source to the belt or coat pocket
- Li-Ion technology – no “memory effect”, without worrying about charge level or battery condition
- Integrated rechargeable battery can be exchanged at authorised specialist

### Item. No.

- |         |   |
|---------|---|
| HE50100 | HEINE LoupeLight2                           |
|         | • Includes: mPack mini and USB power supply |

## Optional Accessories for HEINE LoupeLight2

### Item. No.

- |         |                                      |
|---------|--------------------------------------|
| HE70000 | HEINE mPack with Plug-in Transformer |
|---------|--------------------------------------|

Optional Accessories and Replacement Parts for Heine LoupeLight are available to order

## HEINE ML4 LED HeadLight

The HEINE ML4 LED HeadLight is specially designed for professionals who need a perfect view during long surgical operations or treatments. The headband of the HEINE ML4 LED HeadLight offers multiple adjustments points and soft padding ensuring highest comfort and a firm fit.

- Adjustable illumination spot size
- Bright and homogenous illumination
- Stepless light intensity control
- Flexible Power Source Options: 100 % mobility with a choice of cable-free mPack UNPLUGGED head-worn battery or mPack belt-worn battery pack
- Coaxial design ensures a completely shadow-free image and allows for excellent illumination of difficult to see areas
- Comfortable and secure fit. The Professional L headband has multiple adjustment points and soft padding for comfort and stability – even during long examinations

### Technical specifications

- Illumination: 65,000 lux
- Colour Temperature: 4,500 kelvin
- LED Operating Life: 50,000 hours
- Spot Adjustment: 30 mm to 80 mm at 420 mm WD
- Angle of Declination Stepless and individually adjustable for every examination
- Headband-mounted Rheostat
- Operating Time: 8.5 hours with mPack and 3.5 hours with mPack UNPLUGGED of continuous ON time at full power

### Power Options

#### HEINE mPack

- Portable power pack
- Li-Ion technology – no memory effect, autonomy for 8.5 hours of continuous ON time at full power
- Fast charge – charges to full capacity in 2 hours
- Charge status indicator
- Brightness control
- Flexible charging options: EN 50 Desk and wall charger, or plug-in transformer
- Intelligent – can be used as mains power supply even while in “charge” mode

#### HEINE mPack UNPLUGGED

- Wireless
- Rechargeable battery integrated on the headband
- Lightweight with balanced weight distribution
- Charge status indicator indicates remaining operating time
- Intelligent – can be used as mains power supply even in “charge” mode
- Fast charge – charges to full capacity in 2 hours (operating time 3.5 hours of continuous ON time at full power)



HE52202



HE52200



HE50200

### Item. No.

HE52202	HEINE ML4 LED HeadLight <ul style="list-style-type: none"> <li>• Includes: mPack Battery (convenient to wear on the belt)</li> </ul>
HE52200	HEINE ML4 LED HeadLight <ul style="list-style-type: none"> <li>• Includes: mPack UNPLUGGED (cordless battery pack integrated on the headband offers 100 % freedom of movement)</li> </ul>
HE50200	Heine ML4 LED Head Light Kit with HR Binocular Loupe <ul style="list-style-type: none"> <li>• 2.5x / 420 mm</li> <li>• Includes: ML4 LED Head Light on Professional L headband, HR Binocular Loupe 2.5x / 420 mm, S-Guard, mPack, plug-in transformer</li> <li>• Alternate magnification and working distance available</li> </ul>



310600

310601

### Loupes & Light System

These inexpensive loupes provide a flexible working distance and are suitable for a wide range of detailed work. The coaxial (LED) illumination ensures a shadow-free visualisation of the whole field of view. The battery case can be comfortably worn on the belt or placed in a shirt pocket.

#### Specifications

- 2x magnification
- Illumination: 1,200 lux at 40 cm (working distance)
- Light beam can be adjusted in the vertical plane
- Battery Life: 8 Hours (Normal Mode) / 14 hours (Eco Mode)
- Dioptre adjustment  $\pm 3$  dpt, right / left can be individually adjusted
- Cable length: 1 m
- Loupe weight: 40 g
- Light System weight: 11 g
- Battery case weight: 60 g
- Dimensions without clip (in mm): L 90 x W 55 x D 29
- Dimensions with clip (in mm): L 90 x W 55 x D 40
- Includes: Hard foam case, lanyard for the glasses and 3x AAA batteries

#### Item. No.

310600	Loupes
310601	Loupe Light System



### High Resolution Loupes

This loupe and light system meet the requirements of any kind of surgical operations. It is highly recommended for the first-time users. Excellent price-performance ratio.

- High resolution optics lens with a flip-up design
- One step pupillary distance adjustment
- Adjustable angular viewing
- Multi-coated for: anti-glare, anti-fog, and scratch-resistance
- Loupe is made from strong carbonic acid polyester material

#### Loupe specifications

- Magnification: 2.5x
- Working distance: 320 – 450 mm
- Field of view: 110 mm
- Depth of field: 90 mm
- Weight: 71 g

#### Light description

- Power: 1 W powerful LEDs
- Brightness: 15,000 – 30,000 lux
- Colour temperature: 6,000 kelvin
- Life of bulb: 50,000 hours
- Operation time: 5 hours for a full charge
- Charge time: 3 hours for a full charge
- Battery pack: Rechargeable polymer Li-Ion
- Voltage: 100 – 240 V; 50 – 60 Hz
- Weight: 78 g (12 g light + 66 g battery and charger)

#### Item. No.

311103	2.5x Loupes with LED Light
--------	----------------------------

## VOLK Aspheric Lenses

Aspheric surface corrects the aberrations present in more common spherical lenses. Volk's double-aspheric lenses eliminate more distortion for better overall imaging.

- Lenses with higher Dioptre power provide a smaller field of view, the higher magnification ensures best performance through small pupils.
- Lenses with lower Dioptre power have a wider field of view lower magnification, and are useful for larger size pupils.

### Lens Orientation

Double aspheric lenses are not always symmetric on both sides. A lens with asymmetric aspheres will produce different optical results depending on which side of the lens you look through. The Volk "V" is like an arrow and is designed to point towards the patient.



V10014D



V10030D



V300PR2



V10055M

\* Working Distance

Item. No.		FOV	Mag.	WD* mm
V10014D	VOLK Aspheric Lens • 14 D	36°/47°	4.30x	75
V10015D	VOLK Aspheric Lens • 15 D	36°/47°	4.11x	72
V10020D	VOLK Aspheric Lens • 20 D	46°/60°	3.13x	50
V10025D	VOLK Aspheric Lens • 25 D	52°/68°	2.54x	38
V10028D	VOLK Aspheric Lens • 28 D	53°/69°	2.27x	33
V10030D	VOLK Aspheric Lens • 30 D	58°/75°	2.15x	30
V10030S	VOLK Aspheric Lens • 30 D Small	46°/60°	2.10x	30
V10040D	VOLK Aspheric Lens • 40 D	69°/90°	1.67x	20
V10060D	VOLK Aspheric Lens • 60 D	68°/81°	1.15x	13
V10078D	VOLK Aspheric Lens • 78 D	81°/97°	0.93x	8
V10090D	VOLK Aspheric Lens • 90 D	74°/89°	0.76x	7
V300PR2	VOLK Aspheric Lens • PanRetinal 2.2	56°/73°	2.68x	40
V10055M	VOLK Aspheric Lens • Macula Plus 5.5	36°/43°	5.50x	80
V200DCF	VOLK Digital Clear Field	55°/72°	2.79x	37



173581



173582

## VOLK Gonioscopy Lenses

The G-4 gonioscopy lens with four mirror glasses is a standard gonioscopy lens for static and dynamic gonioscopy with four precisely angled mirrors that offer a full 360° view of the anterior chamber.

The G-6 gonioscopy lens with six mirror glasses is the most advanced gonioscopy lens for static and dynamic gonioscopy. Six angled mirrors offer an excellent panoramic view of the anterior chamber angle compared to conventional four-mirror lenses.

### Item. No.

- |        |  |
|--------|--|
| 173581 | <p>G-4 Gonioscopic Lens</p> <ul style="list-style-type: none"> <li>• Four mirrors with the same angle offer a 360° view of the front chamber</li> <li>• With flange</li> <li>• Viewing angle: 4x 64°</li> <li>• Magnification: 1.0x</li> <li>• Contact pad: 15 mm</li> </ul>   |
| 173582 | <p>G-4 Gonioscopic Lens</p> <ul style="list-style-type: none"> <li>• 2-in-1 handle: The 2-position handle enables adaptation to the anatomical conditions, with standard position (0°) or angular position (45°)</li> <li>• Four mirrors with the same angle offer a 360° view of the front chamber</li> <li>• Without flange</li> <li>• Viewing angle: 4x 64°</li> <li>• Magnification: 1.0x</li> <li>• Contact pad: 8.4 mm</li> </ul>  |
| 173583 | <p>G-6 Gonioscopic Lens</p> <ul style="list-style-type: none"> <li>• Six closely aligned mirrors eliminate gaps and offer a true 360° panoramic view of the front chamber</li> <li>• Easier position determination and overview of the mirrors; no confusion where one view ends and the next begins</li> <li>• Reduces slit lamp maneuvering</li> <li>• Without flange</li> <li>• Large ring</li> <li>• Viewing angle: 6x 63°</li> <li>• Magnification: 1.0x</li> <li>• Contact pad: 8.4 mm</li> </ul>  |
| 173584 | <p>G-6 Gonioscopic Lens</p> <ul style="list-style-type: none"> <li>• 2-in-1 handle: The 2-position handle enables adaptation to the anatomical conditions, with standard position (0°) or angular position (45°)</li> <li>• Six closely aligned mirrors eliminate gaps and offer a true 360° panoramic view of the front chamber</li> <li>• Easier position determination and overview of the mirrors; no confusion where one view ends and the next begins</li> <li>• Reduces slit lamp maneuvering</li> <li>• Without flange</li> <li>• Viewing angle: 6x 63°</li> <li>• Magnification: 1.0x</li> <li>• Contact pad: 8.4 mm</li> </ul> |

### KOEPPE Gonioscopy Lenses

KOEPPE lenses enable examination of the iridocorneal angle and diagnosis of primary glaucoma by creating a corneal vault while leaving the anterior chamber undisturbed. A light slit lamp, head loupe or microscope is required to achieve desirable resolution and illumination.

Item. No.		Ø mm
173577	KOEPPE Diagnostic Gonio Lens	12
	• Image Magnification: 1.70x	
	• Static Gonio FOV: 160°	
173573	KOEPPE Diagnostic Gonio Lens	14
	• Image Magnification: 1.70x	
	• Static Gonio FOV: 160°	
173574	KOEPPE Diagnostic Gonio Lens	17
	• Image Magnification: 1.57x	
	• Particularly suitable for smaller animals	
	• Static Gonio FOV: 160°	
173575	KOEPPE Diagnostic Gonio Lens	18
	• Image Magnification: 1.53x	
	• Particularly suitable for medium sized animals	
	• Static Gonio FOV: 160°	
173576	KOEPPE Diagnostic Gonio Lens	19
	• Image magnification: 1.50x	
	• Static Gonio FOV: 160°	



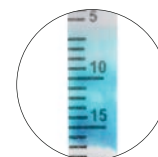
173574

### SCHIRMER Tear Test Strips

SCHIRMER Tear Test Strips can be used to measure basal and reflexive tear production in non-anaesthetised eye.

- Blue colour mark tear front indicator (for easier reading of the values)
- Physiological range in dogs: 15 – 25 mm
- Individually packed – sterile
- 100 per pack

Item. No.	
173592	SCHIRMER Tear Test Strips



Application

### HEINE Mini C Hand-Held Examination Light

This comfortable, ergonomic and compact light has virtually unlimited operating life of the LEDHQ.

- Switches off automatically when placed in the pocket
- 20,000 on/off cycles guaranteed
- Replaceable batteries (size: AAA)

Item. No.	
HE30200	HEINE Mini C Hand-Held Examination Light







### HEINE BETA 200 LED Ophthalmoscope

- Superior aspherical optics now with LED HQ illumination
- Exclusive dustproof design protects the precision optical components and ensures maintenance-free operation.
- LED in HEINE Quality – or LED HQ
- 27 single lenses Rekoss Disk from -35 D to +40 D
- 6 apertures
- Patented, unique, stepless dimming from 3 % to 100 % with practical one-finger operation
- No stray light due to the recessed, multi-coated viewing window – eliminates distractions
- Precise one-hand control of the instrument. Ergonomic design offers flexibility while examining
- Suitable for large as well as small or undilated pupils
- Ergonomic design fits the orbita comfortably, and blocks out ambient light
- Full functionality of the BETA 200S LED is guaranteed with BETA Rechargeable Handles and the EN 200 / EN 200-1 Wall Transformers
- 5 years warranty

#### Item. No.

- |         |                                   |
|---------|-----------------------------------|
| HE12210 | HEINE BETA 200 LED Ophthalmoscope |
|         | • Handle not included             |



HE12220



HE15070

### HEINE BETA 200 Ophthalmoscope

HEINE optimises the Gullstrand principle with aspherical optics (separation of illumination and observation beam). Corneal and iris reflexes are eliminated, a full view is guaranteed even with small pupils.

- XHL Xenon Halogen Technology provide a bright, white light
- 6 apertures with separate red-free filter
- Crossed linear polarising filter
- Recessed, multi-coated viewing window avoids stray light
- Soft orbital support that protects the users' glasses and steadies the instrument due to ergonomic shape
- Optimal working distance of 4 to 5 cm (from the eye)

#### Item. No.

- |         |   |
|---------|---|
| HE12220 | HEINE BETA 200 Ophthalmoscope, 3.5 V            |
|         | • Handle not included                           |
| HE15070 | Spare Bulb HEINE BETA 200 Ophthalmoscope, 3.5 V |
| HE15078 | Spare Bulb Ophthalmoscope HEINE, 3.5 V          |



HE12300



HE15047

### HEINE FINOFF Transilluminator

Small and light, used to examine the fundus. Detachable cobalt blue filter. Suitable for fluorescence examinations.

#### Item. No.

- |         |   |
|---------|---|
| HE12300 | HEINE FINOFF Transilluminator, 3.5 V        |
| HE15047 | Spare Bulb HEINE, 3.5 V                     |
|         | Compatible with:                            |
|         | • Slit Illumination Head (item no. HE12510) |
|         | • BETA Ootoscope Head (item no. HE12111)    |



### HEINE HSL 150 Hand-held Slit Lamp

Compact and lightweight, the portable HSL 150 is ideal for situations where a full-size slit lamp is not available or convenient for the examination of the anterior segment.

- 6x magnification increase by 20 D lens
- The HSL 150 instrument head weighs just 70 g, the lightest slit lamp of its kind
- Continuously adjustable brightness
- Slit size adjustable from 0.2 mm x 10 mm to 4 mm x 14 mm
- Blue interference filter (FITC), can be selected for corneal examination at any time
- Multi-coated optics for maximum light transmission
- 3.5 V XHL Xenon Halogen Technology for bright, white light comparable with the brightness of a classic slit lamp
- Compatible with all HEINE handles

#### Item. No.

- |         |   |
|---------|---|
| HE12420 | <b>HEINE HSL Slit Lamp Plus Loupe Attachment</b> <ul style="list-style-type: none"> <li>• 10-fold magnification when combined with HSL 150 loupe</li> <li>• Increased working distance with a large field of view</li> <li>• Compatible with all 3.5 V HEINE handles</li> </ul> |
|---------|---|



### HEINE HSL 150 Slit Lamp

Compact and lightweight, the portable HSL 150 is ideal for situations where a full-size slit lamp is not convenient. The HSL 150 instrument head weighs just 70g, the lightest slit lamp of its kind.

- Slit size adjustable from 0.2 mm x 10 mm to 4 mm x 14 mm
- 6 x magnification. Can be paired with a loupe attachment piece for 10X magnification (C-000.14.606)
- Blue interference filter (FITC), can be selected for corneal examination
- Multi-coated optics for maximum light transmission
- 2.5 V XHL xenon halogen technology for bright, white light comparable with the brightness of a classic slit lamp
- Battery handle, takes regular AA batteries
- Includes: The Slim handle

#### Item. No.

- |         |                                |
|---------|--------------------------------|
| HE01410 | <b>HEINE HSL 150 Slit Lamp</b> |
|---------|--------------------------------|



### HEINE HSL 150 Set with Rechargeable Handle

Compact and lightweight, the portable HSL 150 is ideal for situations where a full-size slit lamp is not convenient. The HSL 150 instrument head weighs just 70 g, the lightest slit lamp of its kind.

- Slit size adjustable from 0.2 mm x 10 mm to 4 mm x 14 mm
- 6 x magnification. Can be paired with a loupe attachment piece for 10X magnification (C-000.14.606)
- Blue interference filter (FITC), can be selected for corneal examination
- Multi-coated optics for maximum light transmission
- 3.5 V XHL Xenon Halogen Technology for bright, white light comparable with the brightness of a classic slit lamp
- Includes: HSL 150 Hand-held Slit Lamp, BETA 4 SLIM NT rechargeable handle, NT4 table charger (incl. reducer insert), Spare bulb, Hard case

#### Item. No.

- |         |   |
|---------|---|
| HE01411 | <b>HSL 150 Set with Rechargeable Handle</b> |
|---------|---|





### HEINE NT4 Diagnostic-Sets

Accurate diagnosis at first glance with the Heine Direct Ophthalmoscope and Otoscope set. Bright LED illumination with virtually unlimited working life.

#### Item. No.

HEINELEDSET	HEINE NT4 LED Diagnostic-Set Includes:
	<ul style="list-style-type: none"> <li>• HEINE Beta 200 LED Ophthalmoscope</li> <li>• HEINE Beta 200 LED VET Otoscope</li> <li>• HEINE NT4 Table Charger</li> <li>• Set Vet Speculum 61 mm Sanal S (set of 3 specs)</li> </ul>



### HEINE NT4 Table Charger

With the appropriate adapter set all HEINE BETA4 NT and HEINE BETA4 SLIM NT rechargeable handles can be charged in the NT4 table charger. The same applies to all Standard F.O. 4 NT, F.O. 4 SLIM NT and F.O. 4 SHORT NT laryngoscope rechargeable handles.

#### Specifications

- Innovative, compact design: practical and space-saving
- Two independent charging wells: complete functionality for one or two handles at a time
- Automatic charging: independent of the state of charge of the rechargeable battery
- Guarantees extended battery life
- Cannot be overcharged: charger switches off automatically when the battery is fully charged
- Charge status indicator: light pulses from the charging well to confirm the charging mode, continuous light indicates that the charging process has been completed
- Dimensions (in mm): W 142 x H 61 x D 66

#### Item. No.

HE10100	HEINE NT4 Table Charger
---------	-------------------------



HE11200

### HEINE BETA4 Rechargeable Handles and Accessories

- High quality metal construction for high stability and long life
- Unique locking system. No friction from metal to metal, preventing wear and guarantees a secure fit of the instruments
- Deep discharge protection: Protects the battery from total discharge and ensures maximum operating life
- Li-Ion Technology: No 'memory effect' resulting in longer battery life. Fast charging time.
- Durable: Up to 6 weeks of normal operation without recharging when using LED instruments
- High capacity: More than twice the capacity compared to NiMH batteries

#### Item. No.

HE11101	HEINE BETA4 NT Handle Includes:
	<ul style="list-style-type: none"> <li>• Li-Ion Rechargeable Battery (item no HE14002)</li> </ul>
HE14002	3.5 V HEINE BETA Rechargeable Li-Ion Battery <ul style="list-style-type: none"> <li>• Charging time: 2 hours</li> </ul>
HE11200	HEINE BETA4 USB Handle Set Includes:
	<ul style="list-style-type: none"> <li>• Rechargeable Handle complete with Li-Ion rechargeable battery</li> <li>• Base Unit</li> <li>• USB Charging cable and Plug-in Transformer</li> </ul>

## HEINE OMEGA 600 Indirect Ophthalmoscope

Discover more. With less weight.

Lighter. Brighter. Better. HEINE kept the best and perfected the rest. Highly comfortable, the HEINE OMEGA 600 delivers a new class of technological innovation, along with the new and unique visionBOOST for significantly better diagnostic even in dense cataracts.

- Most precise diagnostic, up to the far retinal periphery
- Up to 20 % better view in media opacities with visionBOOST
- Lightest High-End Indirect Ophthalmoscope worldwide
- Long-lasting investment due to its robust design
- Easy disinfection thanks to smoothSURFACE

### Most precise diagnostic, up to the far retinal periphery

- Significantly better diagnostic due to unique visionBOOST
- Sharpest fundus image due to superior glass optics
- Brightest fundus image with true colour rendering thanks to our unique LEDHQ – now in even more natural colours
- Best 3D imaging due to our unique Stereoscopic Adjustment
- Technology in dilated and undilated pupils

### Lightest high-end indirect ophthalmoscope worldwide

- Best wearing comfort
- Personalized fit
- Adaptable for right and left handed users
- Flip-up function for more convenient patient interactions

### Long-lasting investment due to its robust design

- Maintenance-free, dustproof optics
- Legendary HEINE durability
- Optics firmly mounted on an aluminium frame
- 100 % Made in Germany
- 5-year guarantee

### Easy and effective disinfection thanks to smoothSURFACE

- No openings
- Integrated electronics



#### Item. No.

- |         |  |
|---------|--|
| HE60100 | <p>HEINE OMEGA 600 Indirect Ophthalmoscope</p> <ul style="list-style-type: none"> <li>• Includes: OMEGA 600 Indirect Ophthalmoscope (with battery and +2 D eyepiece), E4-USBC power supply with cable, eyepiece 0 D</li> </ul> |
|---------|--|

## HEINE OMEGA 600 Traveller Set

#### Item. No.

- |         |  |
|---------|--|
| HE60200 | <p>HEINE OMEGA 600 Traveller Set</p> <ul style="list-style-type: none"> <li>• Includes: OMEGA 600 Indirect Ophthalmoscope (with battery and +2 D eyepiece), E4-USBC, eyepiece 0 D*, and traveler bag. Remove all skus and images.</li> </ul> |
|---------|--|





Application



### ClearView® Retinal Camera

The Optibrand® ClearView® 3 Retinal Camera is an ophthalmic camera device developed for veterinary professionals to acquire wide-angle digital colour images of the retina using an Apple iPhone SE®.

#### Features

- Auto focus
- Automatic-capture and manual-capture image modes
- Real-Time camera automatically saves best images
- Retina images can be immediately viewed and uploaded to e-mail or text message
- Data transfer to a PC / MAC via iTunes® or iCloud®

#### Technical specifications

- Pupil Size 5 mm diameter or greater
- Field of View: 54.9°
- Working Distance: 20 mm
- Illumination: White light LED powered by 190 mAh Lithium Polymer battery
- Resolving Power: > 8.3 lp/mm
- Image size: 2,080 x 2,080 or roughly 4.3 Megapixels (appx 460 KB)
- Image Format: JPEG
- Operating Time: up to 10 hours of continuous use
- Software ClearView 3 Downloaded from the App Store®
- Lens Tube Length: 81.28 mm
- Camera Case Length: 152.4 mm (Apple iPhone® bracket)
- Overall Width: 82.82 mm
- Weight: 250 g (integrated with Apple iPhone SE® system)

#### Item. No.

OB10100 ClearView® 3 Retinal Camera

*Quality equipment  
for your practice*

Eickemeyer®



© karandaev - stockadobe.com

## Icare® TONOVET Pro Tonometer

### Similar Features to the TONOVET Plus

- Premium quality and accuracy (best suited for Ophtho and High-End GP & ER)
- Same probes and batteries as the TONOVET and TONOVET Plus
- Same 12 Languages as the TONOVET Plus
- Species specific calibrations for Dog, Cat, Rabbit, Horse
- Position assistance lighting system
- Error codes (too far, too near)

### New Features

- New shell – resembles the human iC200 device
- Colour OLED screen on the back of the device (left-handed users rejoice)
- 200-degree positional freedom – IOP measurements can be taken in a downward position
- Probe release control to hold the probe in
- Measurement button is more responsive resulting in a faster IOP results
- 6 measurement default setting - measurements will have a decimal place (ex. 17.6 mmHg)
- Alignment assist – the device can detect that the probe was perpendicular to the cornea
- Additional error message: Incorrect Alignment (the probe was not perpendicular, or the probe hit eyelashes or the eyelid)
- Quick measure setting
- Captures 2 – 3 individual measurements
- Good to use for challenging patients
- Alignment assist is automatically off on this setting
- Display brightness option (sound and Lights can still be turned off/on)
- 100 measurement history instead of 10 measurements
- 3 year warranty instead of a 2 year

### Item. No.

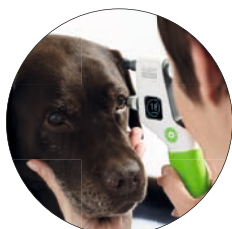
I101003	Icare® TONOVET Pro Tonometer
I103000	100x Probes for TONOVET, TONOVET Plus and TONOVET Pro
I102001	Stand for TONOVET Pro
I106001	Probe Base for TONOVET, TONOVET Plus and TONOVET Pro
I105003	Probe Base Collar for TONOVET Pro
I108010	Green Silicone Grip for TONOVET Plus and TONOVET Pro



Application



I101003



Application



I101001

### Icare® TONOVET Plus Tonometer

Icare® TONOVET Plus is the new generation tonometer for quick and easy veterinary IOP measuring. It is used on animal patients by general veterinary practitioners, veterinary ophthalmologists and other veterinary medical personnel. The TONOVET Plus is even easier to use.

- Quick, painless and accurate procedure
- Easy to use and requires no calibration
- Assisting positioning lights
- Large and easy to read colour display

#### Technical specifications

- Power supply: 4x AA non-rechargeable batteries, 1.5 V alkaline LR6
- Measurement range: 10 – 60 mmHg
- Accuracy:  $\pm 2.5$  mmHg (10 – 30 mmHg) and  $\pm 10$  % (> 30 – 60 mmHg)
- Repeatability (coefficient of variation): < 8 %
- Accuracy of display: 1 mmHg
- Display units: millimeter of mercury (mmHg)
- This device has BF-type electric shock protection
- Dimensions (mm): L 215 x W 24 – 29 x H 35 – 95
- Weight: 140 g (without batteries)
- Includes 100 TONOVET Probes & Transport case

#### Item. No.

I101001	Icare® TONOVET Plus Tonometer
I103000	100x Probes for TONOVET Plus and TONOVET
I102000	Stand for TONOVET Plus and TONOVET
I106001	Probe Base for TONOVET Plus
I105001	Probe Base Collar for TONOVET Plus
I108010	Green Silicone Grip for TONOVET Plus



Application



I101000

### Icare® TONOVET Tonometer

The TONOVET is based on a rebound measuring principle, in which a light probe is used to make momentary, gentle contact with the cornea. The device is easy to use and the measurement is barely noticed by the animal and often does not even cause corneal reflex. The disposable probe touches the cornea very lightly for only a fraction of a second. As no topical anaesthetic or disinfection is needed, the whole procedure is over quickly and disturbance to the animal is minimal with no risk of contamination.

The treatment of the patient is well tolerated with the absence of local anesthesia.

- Quick, painless and accurate procedure
- Self-calibrating
- Portable as it is powered by batteries

#### Technical specifications:

- Weight: 250 g (including batteries)
- Dimensions (in mm): L 230 x W 13 – 32 x H 45 – 80
- Display range: 0 – 99 mmHg
- Accuracy:  $\pm 2$  (5 – 30 mmHg), 10 % (30 – 80 mmHg)
- Power: 4x AA batteries
- Includes 100 TONOVET Probes, 4x AA Batteries & Instruction Manual

#### Item. No.

I101000	Icare® TONOVET Tonometer
I103000	100x Probes for TONOVET Plus and TONOVET
I102000	Stand for TONOVET Plus and TONOVET
I108021	Pink Silicone Grip for TONOVET
I108031	Blue Silicone Grip for TONOVET



### Icare® TONOLAB Tonometer

The TONOLAB tonometer is ideal for easily and accurately measuring intraocular pressure in rodents thanks to two special presets for rats and mice. It measures based on the patented rebound method, with which intraocular pressure (IOP) can be measured accurately, quickly and without local anesthesia. It is well tolerated by the patient because it is hardly noticed.

- Fast, painless and fearless measurements without anesthesia
- High precision
- No calibration necessary
- Light weight

#### Technical data

- Measuring range: 7 – 60 mmHg
- Accuracy:  $\pm 2$  mmHg (5 – 30 mmHg) and  $\pm 10$  % (>30 – 60 mmHg)
- Repeatability (coefficient of variation): <8 %
- Display accuracy: 1 mmHg
- Display unit: millimeters of mercury (mmHg)
- Power supply: 4x AA non-rechargeable batteries
- Dimensions (in mm): W 13 – 32 x H 45 – 80 x L 230
- Weight: 155 g (without batteries), 250 g (incl. 4x AA batteries)

#### Item. No.

1101002 Icare® TONOLAB Tonometer



Application



1736009

### Tono-Pen AVIA® VET™ Tonometer

With over 40 breeds of dogs and cats possessing a predisposition to glaucoma, the Reichert Tono-Pen Tonometer provides simple solution to monitor this condition.

The Tono-Pen AVIA® Vet™ will not require any calibration and is ready for use. The battery lasts four times longer, and boasts a larger LCD screen.

- Patient can be positioned in any way
- Fast and accurate IOP measurement with minimal training
- Less corneal irritation due to smaller sensor
- Disposable covers to eliminate cross contamination
- Easy to read, digital display
- Measuring range: 5 – 55 mmHg
- Long battery life
- Maintenance-free
- Small size, weight 71 g
- Includes 150 protective tip covers (Ocu-Film® +)

#### Item. No.

173600 Tono-Pen AVIA® VET™ Tonometer

173565 Ocu-Film® + Tono-Pen Tip Covers

- Minimises the risk of cross-contamination
- 150 per pack
- Individually wrapped

R100200 Tono-Pen AVIA® VET™ Battery



173600



173605



173690



173691



173692



173693



173694



173691

### KOWA SL-19 Portable Slit Lamp

With its rounded shape and curved handle design, the new KOWA SL-19 Slit Lamp is even more ergonomic. Furthermore, the weight of the hand-held unit has been significantly reduced.

- New LED backlight that can be used simultaneously with the slit light
- New LED blue light illumination for fluorescence observation
- Light intensity can be adjusted with one hand
- Infinitely adjustable slit length (1.5 – 12 mm)
- Longer operating time: up to 6 hours at maximum intensity
- Available in 5 colours: white, black, blue, green and pink
- Smartphone adapter for digital image documentation for common Samsung and iPhone models sold separately (for suitable size and article number visit online shop)

#### Technical specifications

- Magnification: 10x and 16x
- Working distance: about 80 mm at 16x magnification, about 100 mm at 10x magnification
- Effective field of view: Ø10 mm at 16x magnification, Ø 15mm at 10x magnification
- Slit width: Ø 0.1, Ø 0.2, Ø 0.8 mm
- Spot size: Ø 1, Ø 5, Ø 12 mm (slit length continuously adjustable from 1.5 – 12 mm)
- Light intensity: 200 – 20,000 lux (continuously adjustable)
- Power supply: 3x AA batteries (DC 4.8 – 6.4 V)
- Dimensions (in mm): L 197 x H 238 x D 107
- Weight (without batteries): only 620 g

#### Item. No.

173690	KOWA SL-19 Portable Slit Lamp
	• White
173691	KOWA SL-19 Portable Slit Lamp
	• Black
173692	KOWA SL-19 Portable Slit Lamp
	• Blue
173693	KOWA SL-19 Portable Slit Lamp
	• Green
173694	KOWA SL-19 Portable Slit Lamp
	• Pink
173695	Transport Case for SL-19
	• With foam insert
	• Rigid case
	• Colour: black



## KOWA SL-19 plus Portable Slit Lamp with Built-In Camera

The KOWA SL-19 plus is a surprisingly lightweight hand-held slit lamp equipped with a built-in camera. Its features and usage are similar to the SL-19 model without a camera, with the primary difference being that the magnification is exclusively set to 10x.

The SL-19 Plus weighs only 730 g (excluding batteries), making it very easy to handle. This design ensures minimal operator fatigue during prolonged use. With a fixed 10x magnification, the SL-19 plus is suitable for various clinical scenarios. A simple hand movement initiates recording. Videos captured by the SL-19 plus can be wirelessly transferred to an iPad via WiFi. Please note that this feature is compatible only with Apple devices.

When transferred to the iPad, the video is automatically broken down into single images. These individual frames can be selected, saved, and further transferred to a PC using a USB stick or WiFi.

The recorded images are displayed on the iPad using the KOWA SL-19 plus app (available in the App Store), which provides a user-friendly interface for managing and reviewing the captured data.

- Colour: white
- Recording power button: Easily switchable with a simple hand movement
- Light source: white LED
- Ergonomic shape: Designed for comfortable handling during examinations
- Barrier filter B: Used for observing fluorescein under blue light; attachable with a filter tape

### Technical specifications

- Working distance: approximately 100 mm
- Effective field of view: Ø 15 mm at 10x magnification
- Spot size: adjustable slit length from 1.5 mm to 12 mm, with spot sizes of Ø 1 mm, Ø 5 mm, and Ø 12 mm
- Interpupillary adjustment range: 55 mm to 72 mm
- Diopter range: -8 D to +5 D
- Camera field of view: approximately 27 mm to 15 mm
- Effective number of pixels: approximately 2 megapixels
- Wireless LAN interface: IEEE 802.11 a/b/g/n
- Light source: White LED for slit illumination
- Background light: White and blue LEDs in a 3-stage circuit, usable separately from the slit light
- Light intensity: infinitely adjustable from 200 lux to 20,000 lux
- Power supply input: DC 3.0 - 4.8 V (powered by 3x AA Ni-MH batteries or rechargeable batteries); power consumption up to 6 VA
- Battery indicator: flashes orange when battery level is low
- Camera display: shows the operating status of the camera
- Operating time: approximately 8.5 hours if the device is switched off after each use and disconnected from the iPad; approximately 3.5 hours at full power without disconnecting from the iPad
- Scope of delivery: Includes the SL-19 plus, barrier filter B and filter tape for attachment in front of the light source; iPad and batteries not included
- Dimensions (in mm): D 197 x W 107 x H 255
- Weight (without batteries): 730 g

### Item. No.

173696 KOWA SL-19 plus Portable Slit Lamp with Built-In Camera





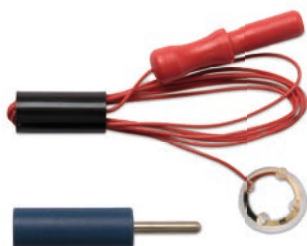
173610



173710



173611



173587

## RETevet™ Portable ERG

The RETePet™ device offers an intuitive interface that allows veterinary ophthalmologists and researchers to perform electroretinograms (ERGs) to measure the retinal function of animals.

### Features

- Extremely small
- Intuitive user interface
- Real-time results
- Completely portable and battery powered
- No need for external filters for dim flashes
- All flashes electronically controlled
- Easy USB connection to any PC
- Comprehensive reports in PDF formats
- Anaesthesia is optional (based on the patient)
- Multilingual interface in 17+ languages

### Technical specifications

- RGB LED technology
- 15 million colour combinations
- Size: 10.5 cm x 15.5 cm
- Weight: 240 g
- Includes: RETePet™ device, docking station, 6 jet electrodes, 10 needle electrodes, dust cover, 3-plug electrode lead, USB cable, power adapter

### Item. No.

173610	RETePet™ Portable ERG
173710	RM Electrode™ – Canine Multi-Use
173611	Reference / Ground Needle Electrode <ul style="list-style-type: none"> <li>• Disposable monopolar needle electrode</li> <li>• Sterile – Individually packed</li> </ul>
173587	ERG Jet Electrode <ul style="list-style-type: none"> <li>• Ø 12 mm</li> <li>• 2 per pack</li> </ul>
E17361001	RETePet™ Adapter Cable for DIN Electrodes
E17361002	RETePet™ Battery
E17361003	RETePet™ Eyecup
E17361004	RETePet™ Dust Cover

### HUG-U-VAC Head Pillow

The HUG-U-VAC Head Positioner uses vacuum technology to create secure positioning for dental, eye, head, and neck procedures. Safe and secure positioning (dorsal, ventral, and lateral) for pre-op prep, surgery, post-op recovery, and imaging (radiolucent).

#### Item. No.

- VOR1018 HUG-U-VAC Head Pillow
- Dimensions (in cm): L 40 x W 30



### Anatomical Eye Model

The anatomical eye model consists of 6 dismantled parts. The eyeball can be dismantled into 2 parts to make the internal structures visible. The lens and vitreous body can be removed from the eye model and viewed more closely. Thanks to the clear, colour-separated representation of the eye skin, eye muscle attachments, retina with the yellow spot, optic nerve and blood vessels, the model eye is ideal for training and study as well as patient education. The eye model can also be used as a nice inventory in the veterinary practice.

- 6-piece model with lots of details
- Eyeball with muscle attachments and optic nerve
- Carefully painted structures
- Vitreous body, lens, iris and cornea can be removed individually
- Includes plastic base
- Dimensions including base (in cm): H 16 x W 13 x D 13

#### Item. No.

- 909040 Anatomical Eye Model

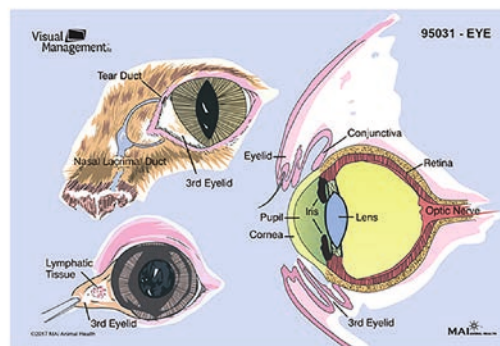


### EduPads

- 100 pages per pad

#### Item. No.

- MA10201 EduPads





### AESCULAP Isis Cat Clipper

The AESCULAP Isis cordless clipper is ideal for preparation for small areas (forelimb, head and neck) when taking bloods, biopsy or for hard-to-reach areas.

- Quiet and low vibration
- Ergonomic design
- Cutting width: 24 mm
- Cutting length: 0.5 mm
- Li-Ion battery: runtime up to 120 min with approx. 90 min charging time
- Charge indicator via charging station
- Weight: 120 g (incl. battery & blade)
- Includes: clipper, blade (carbon blade – cannot be sharpened), charging station, attachment comb (adjustable to 4 different cutting lengths, 3 – 6 mm), brush, AESCULAP oil, instructions

#### Item. No.

K101000 AESCULAP Isis Cat Clipper



### AESCULAP Vega Dog Clipper

Superior cordless clipping. Reduced noise and vibration, whilst delivering superior cordless clipping. Ideal for the abdominal, forelimbs and neck regions.

- Cutting width: 40 mm
- Cutting length: 0.5 mm
- Li-Ion battery: runtime up to 50 min with approx. 120 min charging time
- Charge indicator via charging station
- Weight: 250 g

#### Item. No.

K102000 AESCULAP Vega Dog Clipper

**CONTENT**

<b>A</b>		<b>H</b>		<b>M</b>	
Advanced Ophthalmic Kit.....	3	HEINE BETA 200 LED		METZENBAUM Scissors.....	5
AESCLAP Isis Cat Clipper.....	48	Ophthalmoscope.....	36	MEYHOEFER Chalazion Curettes.....	15
AESCLAP Vega Dog Clipper.....	48	HEINE BETA 200		Mini Ophthalmic Kit.....	3
AlgerBrush II Corneal Burr.....	23	Ophthalmoscope.....	36		
Anatomical Eye Model.....	47	HEINE BETA4 Rechargeable		<b>O</b>	
ARRUGA Capsule Forceps.....	6	Handles and Accessories.....	38	Optional Accessories for	
<b>B</b>		HEINE Binocular Loupes.....	28, 29	HEINE LoupeLight2.....	30
BARRAQUER (Colibri) Forceps.....	8	HEINE FINOFF Transilluminator.....	36		
BARRAQUER-KATZIN (Colibri)		HEINE HSL 150 Hand-held Slit Lamp	37	<b>R</b>	
Forceps.....	9	HEINE HSL 150 Slit Lamp.....	37	RETevet™ Portable ERG.....	46
BARRAQUER Needle Holders.....	10	HEINE HSL 150 Set with			
BARRAQUER Speculum.....	16	Rechargeable Handle.....	37	<b>S</b>	
BARRAQUER-TROUTMAN		HEINE LoupeLight2.....	30	SCHIRMER Tear Test Strips.....	35
Needle Holder.....	10	HEINE LoupeLight2 Set.....	29	SCORE® Ergo Support Chair.....	25
Bausch & Lomb PureVision® 2		HEINE Mini C Hand-Held		SCORE® AMAZONE / JUMPER	
Bandage Contact Lenses.....	23	Examination Light.....	35	Stools.....	26
BISHOP-HARMON Iris Forceps.....	7	HEINE ML4 LED HeadLight.....	31	SCORE® MEDICAL Treatment	
BOWMAN Lacrimal Probe.....	17	HEINE NT4 Diagnostic-Sets.....	38	Stools.....	27
BOYNTON Needle Holder (TC).....	11	HEINE NT4 Table Charger.....	38	ST. MARTIN Corneal Forceps.....	9
<b>C</b>		HEINE OMEGA 600 Indirect		STADES Nictating Forceps.....	13
CASTROVIEJO Caliper.....	18	Ophthalmoscope.....	39	Starter Ophthalmic Kit.....	2
CASTROVIEJO Cyclodialysis		HEINE OMEGA 600 Traveller Set.....	39	STEVENS Tenotomy Scissors.....	4
Spatula.....	13	HESS Capsule Forceps.....	7	Sugi Swabs.....	24
CASTROVIEJO Needle Holders.....	11	HESS (Colibri) Iris Forceps.....	8	SuperCut Scissors (MC).....	4
CASTROVIEJO Scissors.....	5	High Resolution Loupes.....	32	Suture Forceps.....	10
CASTROVIEJO Speculum.....	16	HUG-U-VAC Head Pillow.....	47		
CASTROVIEJO Suture Forceps.....	9	<b>I</b>		<b>T</b>	
Cautery Pen.....	24	Icare® TONOLAB Tonometer.....	43	Tono-Pen AVIA® VET™	
ClearView® Retinal Camera.....	40	Icare® TONOVET Plus Tonometer.....	42	Tonometer.....	43
<b>D</b>		Icare® TONOVET Pro Tonometer.....	41	<b>V</b>	
DESMARRES Chalazion Forceps.....	12	Icare® TONOVET Tonometer.....	42	VANNAS Cataract Scissors.....	6
DESMARRES Retractors.....	17	Intraocular Silicone Prosthesis.....	22	VOLK Aspheric Lenses.....	33
DOUGLAS Cilia Forceps.....	11	Iris Scissors.....	4	VOLK Gonioscopy Lenses.....	34
<b>E</b>		<b>J</b>		<b>W</b>	
EduPads.....	47	JAMESON Caliper.....	18	WEBER Wire Loop.....	17
EickFil Ophthalmic Suture		JAMESON Strabismus/		WESTCOTT Scissors.....	6
Material.....	20, 21	Muscle Hook.....	14	WILDER Lacrimal Dilators.....	18
Enbio S B-Class Autoclave.....	19	<b>K</b>			
<b>F</b>		KELLNAR Lacrimal Dilators			
Fine Surgical Blades.....	22	and Tubes.....	18		
<b>G</b>		KNAPP Conjunctiva Forceps.....	13		
GASS Retinal Detachment Hook.....	15	KNOLLE-PEARCE Irrigating Vectis... ..	17		
GILL-ARRUGA Capsule Forceps.....	7	KOEPPE Gonioscopy Lenses.....	35		
GRADLE Cilia Forceps.....	12	KOWA SL-19 plus Portable Slit Lamp			
GRÄFE Eyelid Retractor.....	16	with Built-In Camera.....	45		
GRÄFE Fixation Forceps.....	12	KOWA SL-19 Portable Slit Lamp.....	44		
GRÄFE Iris Forceps.....	8	KUHNT Corneal Scraper.....	14		
GRÄFE Iris Hook.....	14	<b>L</b>			
GRÄNITZ Eyelid Spatula.....	15	Lacrimal Duct Cannulae.....	19		
		LANDOLT Enuclation Scissors.....	5		
		Loupes & Light System.....	32		

T +1 519 273 5558 | [info@eickemeyervet.ca](mailto:info@eickemeyervet.ca) | [www.eickemeyercanada.ca](http://www.eickemeyercanada.ca)

Eickemeyer®

## NOTES

[illegible]

EICKEMEYER Inc.  
617 Douro Street, Suite 205  
Stratford, Ont. Canada  
N5A 0B5  
T +1 519 273 5558  
info@eickemeyervet.ca  
www.eickemeyercanada.ca